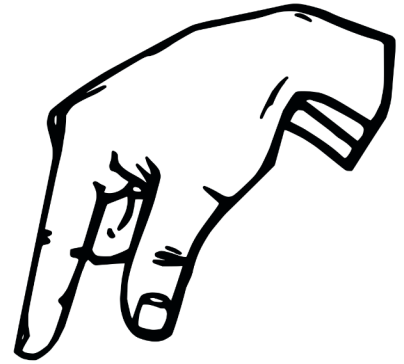
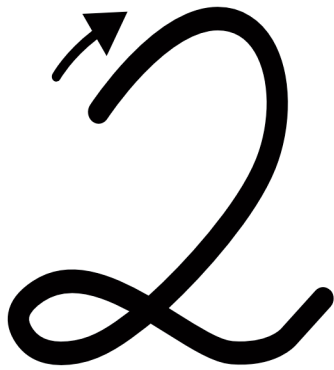


Name: _____



Trace the letter then write it on your own

Tracing practice for the cursive letter '2'. The page contains four rows of handwriting lines. Each row consists of a solid top line, a dashed middle line, and a solid bottom line. The first three rows each contain seven dashed cursive '2's for tracing. The fourth row contains seven blank handwriting lines for independent practice.